

PROGRESSING OKAKO



CATALOGUE

OKADA OPT. IND. CO., LTD.

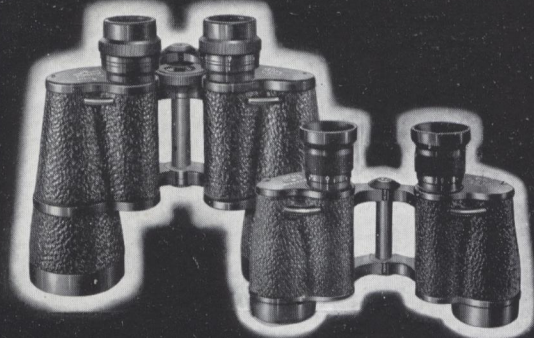
NIPPON

TOKYO

PRISM BINOCULARS

Himaraya, Zepter, Myna, Arma, Creamy,
Dabit, Garam Opera, Glass, Etc.

Filter y—2 Medium yellow.

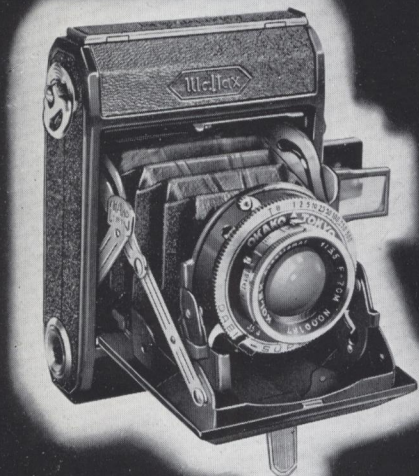


WALTAX CAMERA

Shutter T.B. 1 Sec. to 1/500 Seconds.

DABIT SUPER SHUTTER.

Lens: KOLEX ANASTIGMAT 1:3.5 F. 7 c/m.



PHOTOGRAPHIC ACCESSORIES

Filters, Lens Hoods, Contameters, Magazines,
Haze Filters, Lens Attachments,
Prism Finders, etc.



OKADA OPT. IND. CO., LTD.



Okada Optical Ind. Co., Ltd.
Manufacturers & Exporters

374 NISHISUGAMO 4-CHOME TOSHIMA-KU
TOKYO, JAPAN

Factories
NISHISUGAMO, TOSHIMA
TOKYO

Telephone:
OTSUKA (2) 0884-7187, 4787

Tokyo, October 1940

Gentlemen,

The development of the optical apparatus has progressed in great demand. In reviewing the present situation of the civilized world, investigation and the public's interest which have brought up to the normal line of the present world optical products. And by this very important period it is our great pleasure to present you our Catalogue No. 28 and if it may help you for your guidance both in photographic and optical articles, then we are much pleased. Of course, our catalogue is not a complete one, this is a presentation of our substantial line of photographic and optical articles of which are manufactured by our factories.

As we have more than twenty years of experience in this line of the business and our goods have been in use in most of Japan's largest industrial, educational, governmental laboratories and our goods have been authorized by the high officials of the government and by the powerful merchants of the domestic and abroad markets.

It is our great pleasure to inform you those who have the very close connection with us, are progressing their business in quite demand which may mean that our goods give them the perfect satisfactions.

Originally, the business does not mean purchase and sale, but it is to make the very close friendly connection for both to our mutual profit and advantage.

At the closing, we may ask you to make a good business transaction may extend forever and we will endeavour to give you the perfect satisfactions in favour of your side,

We remain, Dear Sirs,

Very faithfully yours,

OKADA OPTICAL INDUSTRIAL CO., LTD.
T. Okada
President.

INTRODUCTION

Some people says "Japan: Master of the Orient" thus "OKAKO Goods are the master of the world.

In another words, our goods are widely spread all over the world and they are welcomed from every continent.

For horse racings, huntings, picnics, travellings, or in visiting the theatres, binoculars and cameras are quite useful things which will never be able to cut off from our daily life or from the present civilized world.

Even in the days of the Grecians, the Romans, the Egyptians, the Indians, the heavy industries were quite developed but still the world was not so chemically civilized like now, even then the peoples of the different colonies of those days tried to amuse their eyes by help of some sort of instruments. Believe it or not, some historian may say that "the present Gallelio Binoculars are the reconstruction of the Clairvoyance."

At any rate, we the present opticians got a lot of hint from our seniors and have subjugated all the difficulties and have constructed the present binoculars and cameras.

"OKAKO" brands are known for their 120% finish, smartness, lightness and long durabilities. By through the clear lenses of the prisms, people can admire the natural beauties and can give the perfect satisfactions to their eyes in the most sensible ways. Of course, there are many kinds of binoculars and cameras but in order to draw your attention we have fully explained the constructions and the uses of our goods which you will see from the following pages on.

If this small catalogue may give you a little guidance in the lines of the optical goods, we are simply pleased.

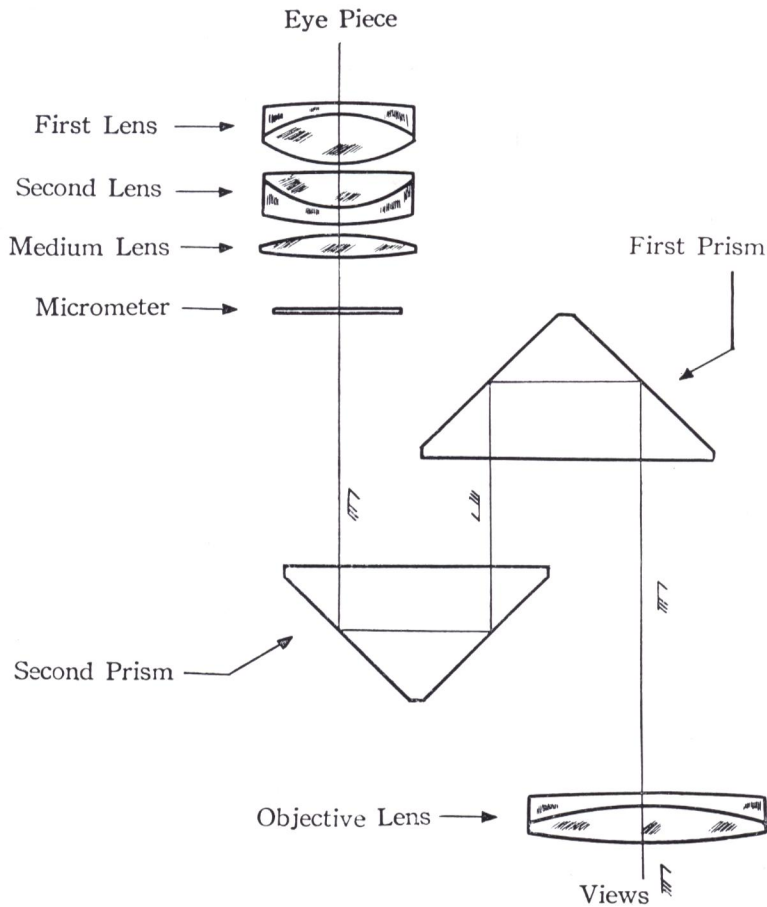
If you find anything which may interest you please send us your inquiries, we will sample you and send you the quotations immediately.

If you handle anything which may not appear in this catalogue please send us your inquiries, preferably accompanied with your samples or with your full particulars.

Samples: Less 30%.

Payments: Always in Irrevocable Letter of Credit in full order amount without recourse.

DESCRIPTION OF PRISM BINOCULARS
INSIDE VIEW OF PRISM BINOCULARS



PRISM BINOCULARS

Our Binoculars and Opera Glasses are a product of the most advanced scientific design. They are of the prism type of construction and have many advantages over the old Galilean or straight-barrel type of field glass. These binoculars are lighter in weight, more compact, give a larger field of view, better illumination, clear definition and an enhanced stereoscopic effect

PRISM BINOCULARS

"HIMARAYA"

7×50m/m



Art. P 300

PARTICULARS

Among Japanese made Binoculars, it is the most superior quality and it is known for its very high light transmitting power.

It is constructed with the central extension and is quite easy to adjust.

Can be used in evening and in night, arranged to prevent sea rust, welcomed for the watch and marine uses.

Magnification : 7 ×	Height. 173 m/m
Effective Dia of Object : 50 m/m	Width. 200 m m
Light Transmitting Power : 50.8°	Weight. 1.180 Grs.
Field of View, Linear at a Distance of : 125 Meter 1000 Meter.	Remarks Each packed to a pure Leather case

PRISM BINOCULARS

“ ZEPTEK ”

7×50m/m



Art. P 301

PARTICULARS

Its character is about the same as the “HIMARAYA”

Adjustment of the distances are done by the oculars

Can be used in rainy days, in nights, in huntings, in aviations, in navigations, etc.

It is made of very light materials and will prevent sea rust.

Magnification : 7 ×	Height : 171 m/m
Effective Dia. of Object : 50 m/m	Width : 200 m/m
Light Transmitting Power : 50.8°	Weight : 1.100 Grs.
Field of View, Linear at a Distance of : 126 Meters 1000 Meters.	Remarks Each packed to a pure Leather case.

Try out Profitable Line!

PRISM BINOCULARS

“ MYNA ”

8×30m/m



Art. P 302

PARTICULARS

Used specially in the Military Circles. It is constructed with the central extension and it is quite easy to set up the Micrometer. Specially used in the Deserts, Plains, Mountains, etc.

Magnification. 8 ×	Height. 118 m/m
Effective Dia. of Object : 30 m/m	Width. 164 m/m
Light Transmitting Power : 14°	Weight. 530 Grs.
Field of Oiew, Liner at a Distance of : 135 Meters 1 00 Meters.	Remarks Each packed to a pure Leather case.

PRISM BINOCULARS

“ ARMA ”

8 × 30m/m



Art. P 303

PARTICULARS

The above article's lenses are somewhat like “MYNA”.

It is made of very strong materials and the adjustment of the distances are done by the oculars. Specially used in Artillery, Cavalry, Aviation, etc. It is quite easy to set up the micrometer.

Magnification. 8 ×	Height. 117 m/m
Effective Dia. of Object : 30 m/m	Width. 163 m/m
Light Transmitting Power : 14°	Weight. 480 Grs.
Field of View, Linear at a Distance of : 35 Meters 1 00 Meters.	Remarks Each packed to a pure Leather cast.

Names Must be not Only Thought out But Sought out.

PRISM BINOCULARS

“ DABIT ”

6×24m/m



Art. P 304

PARTICULARS

The above article is exactly the same as the binoculars which are generally used in the Military Departments.

This is newly designed prism binoculars and it is known for its very High Light Transmitting Power.

Welcomed by the Infantry, Cavalry, Engineer, Transport Corps, etc.

And also it is quite easy to set up the micrometer.

Magnification: 6 ×	Height. 95 m/m
Effective Dia. of Object: 24 m m	Width. 155 m m
Light Transmitting Power: 16°	Weight. 420 Grs.
Field of View, Liner at a Distance of : 170 Meters 10000 Meters.	Remarks Each packed to a pure Leather case.

PRISM BINOCULARS

"GREAMY"

8 × 25 m/m



Art. P 305

PARTICULARS

This is known for its smallness and its smartness. There is no difficulty in constructing the binoculars, therefore, the resolution is very clear.

This is specially used military purposes, such as: in the Aviation Bureau, Air Observation Post, etc.

Magnification: 8 ×	Height. 98 m/m
Effective Dia. of Object: 25 m/m	Width. 153 m/m
Light Transmitting Power: 9.6°	Weight. 430 Grs.
Field of View, Linear at a Distance of ; 117 Meters 1000 Meters.	Remarks Each packed to a pure Leather case.

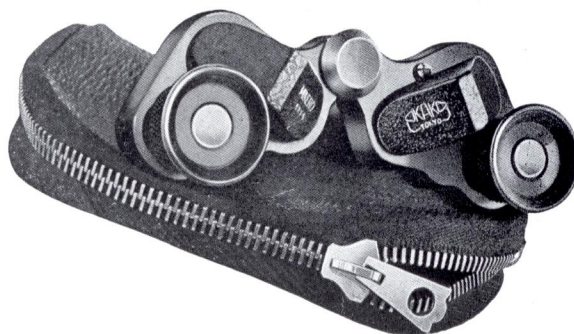
PRISM BINOCULARS

"MINERO"

6×15m/m



Art. P 306



PARTICULARS

This is another newly designed Prism Binoculars. It is known for its smallness and lightness. Can be used in visiting the theatres, mountaineer, sporting, motorists, etc. It is quite easy to put in your vest-pocket.

Magnification 6×	Height 45 m/m
Effective Dia. of Object 15m/m	Width 94 mm
Light Transmitting Power 6.8°	Weight 120 Grs.
Field of View at a Dist. of 100 Meters 138 Metres	Remarks: Each Packed to apure Leather case

OPERA GLASS

"GARAM"

PARTICULARS

It is known for its very strong light transmitting power.

Lens materials are German, and it is arranged very strong.

Welcomed by the sportsmen, hikers, general out door games, etc., etc.

Each packed in an individual leather Case.

LEO OPERA GLASS	
Magnification	3×30
Width	99 m/m
Height	43 m/m
Weight	130 Grs.



Art. P 308



Art. P 307

GARAM OPERA GLASS	
Magnification	3×34
Width	107 m/m
Height	70 m/m
Weight	245 Grs.

Don't Depend on Memories Send Your Inquiries.

FOUNTAINPEN TYPE "DABIT" POCKET MICROSCOPE



This is another new line of our "DABIT" articles, it is quite easy to carry about in your vest pockets Welcomed by the students and amature chemists.

Magnification	Length	Weight
60 x	127 m/m	70 Grs,

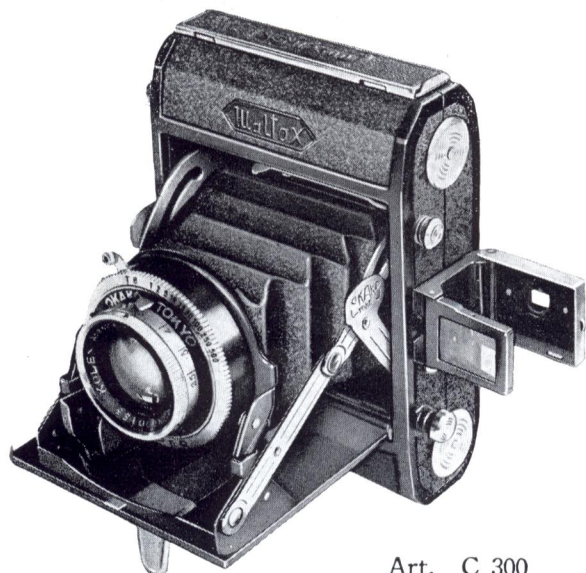


WALTAX CAMERA

Waltax camera is the most precise camera ever manufactured in Japan. It is the camera of the highest quality favourably comparable with the best makes of similar cameras of foreign countries. The "WALTAX" is thus the right sort of camera for those who find it impossible to take much care of their "accessories" and sporting, motorists, mountaineers, and pressmen will all find it an ideal instrument.

If you inquire at your agencies or direct to us, we will glad to forward you together with our cheapest price list.

Body : The body is made of very light metal so there is no trouble to carry



Art. C 300

about, the slightly flattened corners are not only to give the camera a graceful appearance but also make it easier to hold in the hand. The covering of black grained leather gives a smart finish to the camera and it is also waterproofed.

One special advantage of "WALTAX" camera is built in body shutter release, and it will go as pressing the first button, the camera lid opens, and the shutter will come out gradually, pressing the second button, then the snap has already be taken. This action will be done within a couple of seconds.

Ever Ready Case :

The camera will be supplied to you in a very smart finished ever ready case. The use of the case is recommended, since it protects the instrument from the accidental injury.

Weight : Camera itself : 450 Grs.

Ever Ready Case : 170 Grs.

DESCRIPTION OF THE CAMERA FROM OUTSIDE

No. 1 Top Key Bar

By pulling the edge of the bar the camera back will be easily opened, thus you can put in your roll film.

No. 2 Button for Lid and Finder Opener

By pressing this button the lid will open and the shutter will come out very gradually and at the same time the finder will be in a exact position.

No. 3 Finder

By looking through this finder you can press the body release button.

No. 4 Speed of the Shutter

By fixing up these figures the speed of the shutter will be arranged from T. B. 1 to 1500 Sec.

No. 5 Lens Focusing Distance

By fixing up these figures the distance between the camera and the object will be easily arranged.

No. 6 Graduated Diaphragm

According to the sun rays and the speed of the object, diaphragm will be adjusted.

No. 7 Adjustable Lever for the Diaphragm

By moving the lever it is quite easy to adjust the diaphragm.

No. 8 Shutter Set Lever

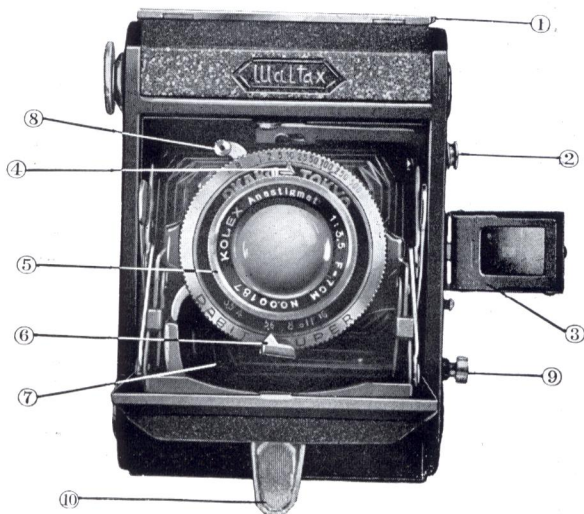
Before you take the snap, always the shutter set lever must be put in upwards and press the body release button, otherwise the snap will never be taken.

No. 9 Body Release

First of all you must arrange everything as: fixing up your shutter set lever, diaphragm, focusing distances etc., and press the button.

No. 10 Camera Stand

When you wish to take a snap of very small article, then most of the people will put the camera on a table or on a some sort of the bench, in that case pull out the knob, then the camera will stand still.



DABIT SHUTTER

Completely made of metal, and unaffected by temperature or other climatic changes, while working accurately under all conditions. Instantaneous exposures of T.B. 1 sec. 1/2, 1/5th, 1/10th, 1/25th, 1/50th, 1/100th, 1/250th & 1/500th of a second are provided, and time exposures (the shutter opens when the release is pressed, and shuts when the finger is taken from the release) of any duration are also possible. The range of the Dabit Super Shutter includes architecturs and landscape work as well as sporting pictures involving rapid motion.

Exposure: 4.5×6 cm on the Standard Brownie Film

Shutter: Exposures are arranged for T.B. and Instantaneous from 1 to 1/500 Seconds.

Lens: Anastigmat Kalex 1 : 3.5 7 c/m

Focusing: Lens Focusing—Distances 1, 1.25, 1.5, 2, 2.5, 3, 4, 6, 10 Meters.

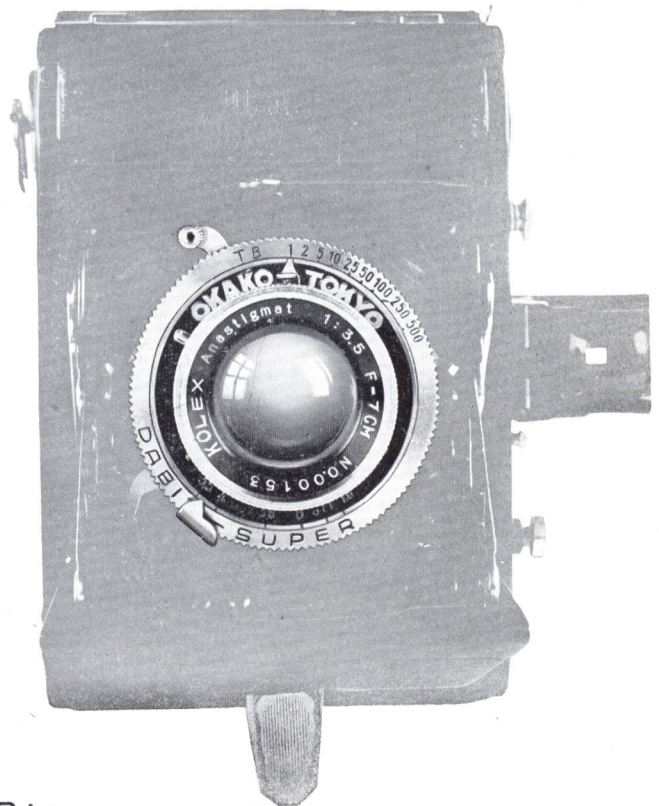
or we can supply as unders:

Lens Focusing—Distances 3, 4.6, 6, 9, 15, 24, 48 Feet.

DABIT SUPER SHUTTER

Art. C 301	Dabit Super Shutter	1:2.8	7 c/m
" C 2	" "	1:2.8	7.5 c/m
" C 3	" "	1:3.5	7 c/m
" C 4	" "	1:3.5	7.5 c/m
" C 5	" "	1:4.5	7 c/m
" C 6	" "	1:4.5	7.5 c/m

Please note that all above are only shutters



SHUTTER LENS

Lens fitted to the WALTAX CAMERA is Tessar type and is of the highest quality with a focal length of 7 cm and full aperture of 1:3.5

Our shutter is composed of four lenses and is called the Anastigmat.

Every aberration has been perfectly removed, therefore, and its focal-plane shutter, are deeply impressed.

It is quite easy to arrange the distance of 3 feet by turning the front lens of the shutter and it is quite easy to close the lid with our special filter on.

PHOTOGRAPHING ORDER

- 1) First of all look through from the windows of the camera back and check up whether the film number is correct or not.
- 2) And press the button (No. 2) then the shutter will come out gradually
- 3) Arrange the exact distance.
- 4) Fix up the diaphragm and shutter and pull up the set lever (No. 8) to the exact position.
- 5) As per the picture hold the camera with both hands and put your left hand forefinger on the body release button.
- 6) By through the finder keep the exact position of the objects.
- 7) And press down the body release button without shaking the camera.
- 8) Immediately after these action, distance figure (range meter) should be put back to around 16 feet.
- 9) And the film must be wound up to the next number.
- 10) Then you can put your camera back to the ever ready case.
- 11) Do not close the lid, while the shutter is set up

Supplementary Lenses for Artistic Photographs**SOFT FOCUS LENS**

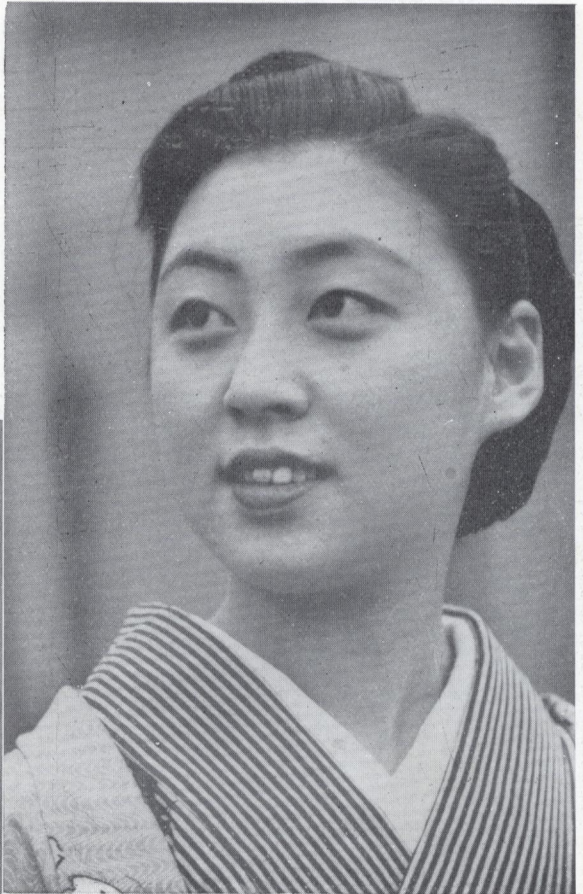
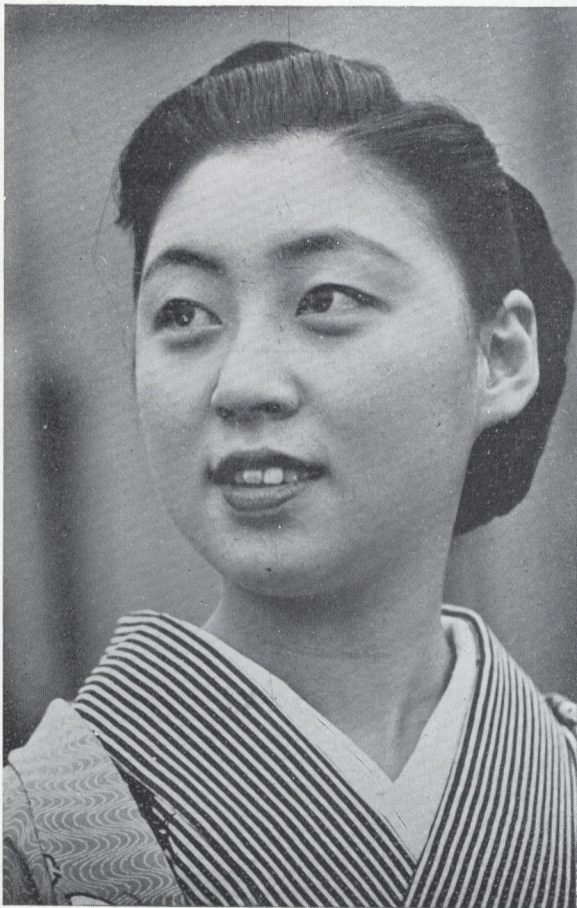
In order to take the very artistic photographs the supplementary lenses should be screwed into the lens mount, this is called the SOFT FOCUS LENS.

Of course, when you take the photographs by using the Soft Focus Lens the objects will appear on your negatives very softly but some people may think that the soft appearance on the negative is the cause of the focal arrangement. Of course, even you use the Soft Focus Lens the focal arrangement should be accurated.

DABIT SOFT FOCUS LENS

Art.	L 402	28.5 m/m	Rollei Soft Focus Lens with Frame
	„	L 403	Contax Soft Focus Lens with Frame
	„	L 404	Rollei U2 Soft Focus Lens with Frame
	„	L 405	32 m/m Soft Focus Lens with Frame
	„	L 406	37 " Soft Focus Lens with Frame
	„	L 407	42 " Soft Focus Lens with Frame
	„	L 408	36 " Soft Focus Lens with Frame for Leica Camera
	„	L 409	25 " Soft Focus Lens without Frame
	„	L 410	30 " Soft Focus Lens without Frame
	„	L 411	40 " Soft Focus Lens without Frame
	„	L 412	50 " Soft Focus Lens without Frame
	„	L 413	55 " Soft Focus Lens without Frame
	„	L 414	60 " Soft Focus Lens without Frame
	„	L 415	65 " Soft Focus Lens without Frame

Grab Every Opportunity to Show the Outfit, Don't Wait for Folks to Inquire.



MT. FUJI (FUJI-SAN)

We usually call this mountain "Fuji-San" and it is known for the symbol of Japan, and every young and old of this country will try to climb this mountain during the summer vacations, while in winter the foot of "Fuji-san" will be changed for its famous winter sports paradise as for Skiing, Skating Climbing, hunting hairs etc.

The foot of "Fuji-san" extends over two prefectures, Shizuwoka, & Yamanashi.



Lens · Kalex Anastigmat 1: 3.5
Speed of Shutter 1/50
Filter; DABIT Y-2



Lens: Kalex Anastigmat 1: 3.5
Speed of Shutter 1/250
No Filter.

"DABIT" FILTERS

In order to take very distinct photographs and in order to avoid the halations & reflections on your lens, usually the filters must be screwed into the lens mount.

By using the filters, the objects will come out on your negatives very clearly, the particular filters to use on these special occasions may be seen from the attached table which also gives details of the increase of exposure necessiated by the various types.

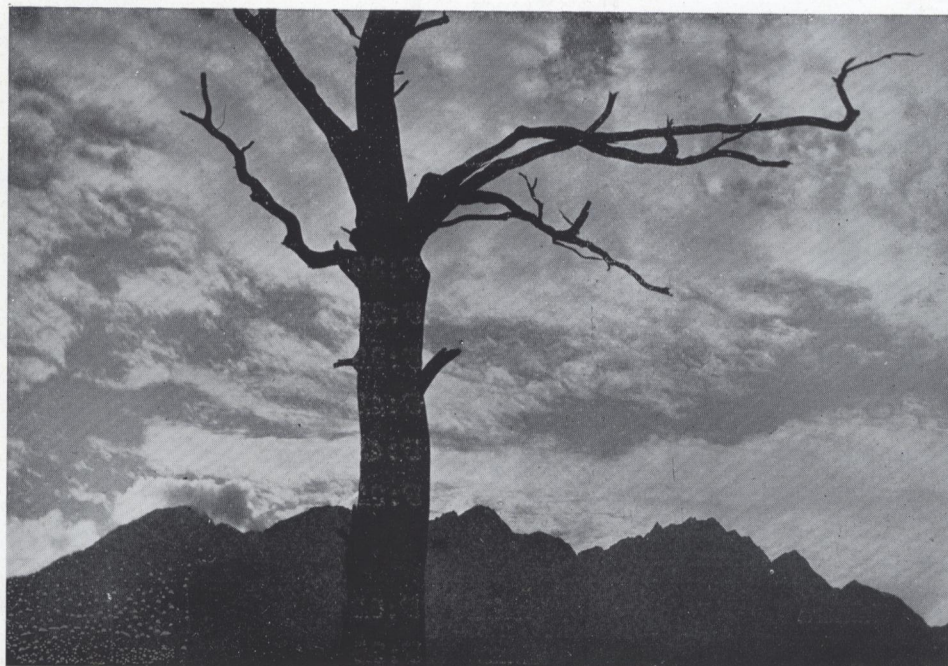


Type of Filter	Filter colour	Type of Exposure	Type of Film Used	Exposure Factor	Remarks
Y-O	Almost Clear but with Strong Ultra-Violet Absorption	Mountain Photography	S.S. Pan Film Panchromatic ISO Chrom	0.5 × 1 × 1.5 ×	
Y-1	Light Yellow	Sporting and Fast-moving Subjects, also Portraits and Landscapes with Low Sun	S.S. Pan Film Panchromatic ISO Chrom S.S. Pan Film	1.2 × 1.3 × 2 × 1.2 ×	Art. Illum.
Y-2	Medium Yellow	Landscapes and Snow-Scapes	S.S. Pan Film Panchromatic ISO Chrom S.S. Pan Film	1.5 × 2 × 3 × 1.5 ×	Art. Illum.
Y-3	Yellow	Landscapes with Distance Views	S.S. Pan Film Panchromatic ISO Chrom S.S. Pan Film	2 × 3 × 4 × 2 ×	Art. Illum.
Y-4	Orange	Distant views without foreground, aerial photographs, also for reproductions and when extra contrast is needed	S.S. Pan Film Panchromatic ISO Chrom S.S. Pan Film	3 × 4.5 × 8 × 3 ×	Art. Illum.
R-1	Orange Red	Distant Views Infra Red Works	S.S. Pan Film Panchromatic S.S. Pan Film	5 × 10 × 2.5 ×	Art. Illum.
R-2	Red	Distance Objects, and Night Effects, Infra Red Works	S.S. Pan Film Panchromatic S.S. Pan Film	10 × 15 × 4 ×	Art Illum.
R-3	Deep Red	Infra Red Works	S.S. Pan Film Panchromatic	20 × 50 ×	
G-O	Light Yellow Green	Landscapes without Distant Objects and Snowscapes	S.S. Pan Film Panchromatic ISO Chrom S.S. Pan Film	1.2 × 2 × 2 × 1.2 ×	Art. Illum.
G-1	Yellow Green	Landscapes without Distant Objects and Snowscapes	S.S. Pan Film Panchromatic	3 × 4 ×	
G-2	Deep Green	Landscapes with distant Objects, Snow Scenes	S.S. Pan Film Panchromatic S.S. Pan Film	4 × 5 × 5 ×	Art. Illum.
P.O.B.	Sky Blue	Used only for Artificial Illumination	S.S. Pan Film Panchromatic S.S. Pan Film	1.5 × 1.5 × 1.2 ×	Art. Illum.

Names Must be not Only Thought out But Sought out.

As you can see from the table that our filters' colours are divided into 12 different colours and we may be able to manufacture any other colour according to your desire.

Art. F 500	Filter with Frame 21 m/m	Following are the special filters with
„ F 501	„ „ „ 24 „	special frames. Can be manufactured
„ F 502	„ „ „ 27 „	with your quantily order.
„ F 503	„ „ „ 28.5 „	
„ F 504	„ „ „ 32 „	F 510 Filter with Frame 43 m m
„ F 505	„ „ „ 33 „	F 511 „ „ „ 45 „
„ F 506	„ „ „ 34 „	F 512 „ „ „ 47 „
„ F 507	„ „ „ 36 „	F 513 „ „ „ 48 „
„ F 508	„ „ „ 37 „	F 514 „ „ „ 51 „
„ F 509	„ „ „ 42 „	



Filter G—0 Light yellow green.

SPECIFICATION OF THE DABIT FILTER WITH FRAME

For 27 m/m

Semi Ikonta Camera	Tessar	F : 4.5
” ” ”	Nova	F : 4.5
” ” ”	Nova	F : 6.3
Kodak Retina Camera		F : 3.5
Kokak Model 620 Camera		



For 28.5 m/m

Rolleiflex Camera	Tessar	F : 3.5
” ”	Tessar	F : 3.8
Rolleicord ”	Triotur	F : 3.5
” ”	Triotur	F : 4.5
Ikoflex ”	Tessar	F : 3.5
Virtus ”	Helliar	F : 3.5
Virtus ”	Skopar	F : 3.5

Camera Waltax
Duto Lens 32 m/m



For 34 m/m

The explanation is same as the size 28.5 m/m and the photographed Hood can be used.

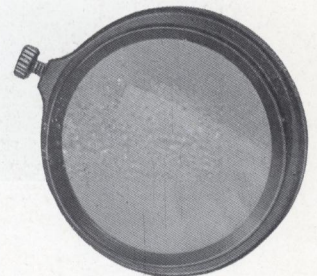
For 32 m/m

WALTAX CAMERA	Kolex	F : 3.5
Super Semi Ikonta Camera	Tessar	F : 3.5
Semi Ikonta Camera	Tessar	F : 3.5
Valdax Camera	Tessar	F : 4.5
Welter Perle Camera	Tessar	F : 4.5
Welter Perle Camrra	Tessar	F : 3.5



Far 36 m/m

Leica Camera	Hecktor	F : 6.3
” ”	Elmar	F : 3.5
” ”	Summar	F : 2
” ”	Xenon	F : 1.5
” ”	Hecktor	F : 1.9



Camera Waltax
without

Every Sale of Okako Product Starts a Big Parade.

For 37 m/m

Super Ikonta Camera	Tessar	F:3.8
Super Ikonta Camera	Tessar	F:4.5
Super Six Camera	Tessar	F:3.5
Super Six Camera	Tessar	F:2.8
Ikonta 2B Camera	Tessar	F:4.5
Valdax Camera S Compur	Tessar	F:2.8
Welter Perle Camera	Tessar	F:2.8
Korelle 6×6 Camera	Tessar	F:2.8
Welter Trio 2B Camera	Tessar	F:4.5
Nettur Camera	Tessar	F:4.5
Exacta Camera	Tessar	F:2.8
Kodak Regent Camera (S. R. Compur)		F:3.8



For 42 m/m

Contax Camera	Sonar	F:2
” ”	Sonar	F:1.5
” ”	Tessar	F:2.8
” ”	Tessar	F:3.5
” ”	Biotor	F:2
” ”	Biogon	F:2.8
Makina Camera	Anticomar	F:2.9
Hand Camera 8" × 12"		
Class F 135	Tessar	F:4.5



42 m/m Dabit Filters for the Telephoto Lenses

Contax Camera	Tele Tessar	F:6.3 180 m/m
” ”	Sonar	F:2.8 180 m/m Lens Dia. 80 m
” ”	Tele Tessar	F:8 30 cm Lens Dia.

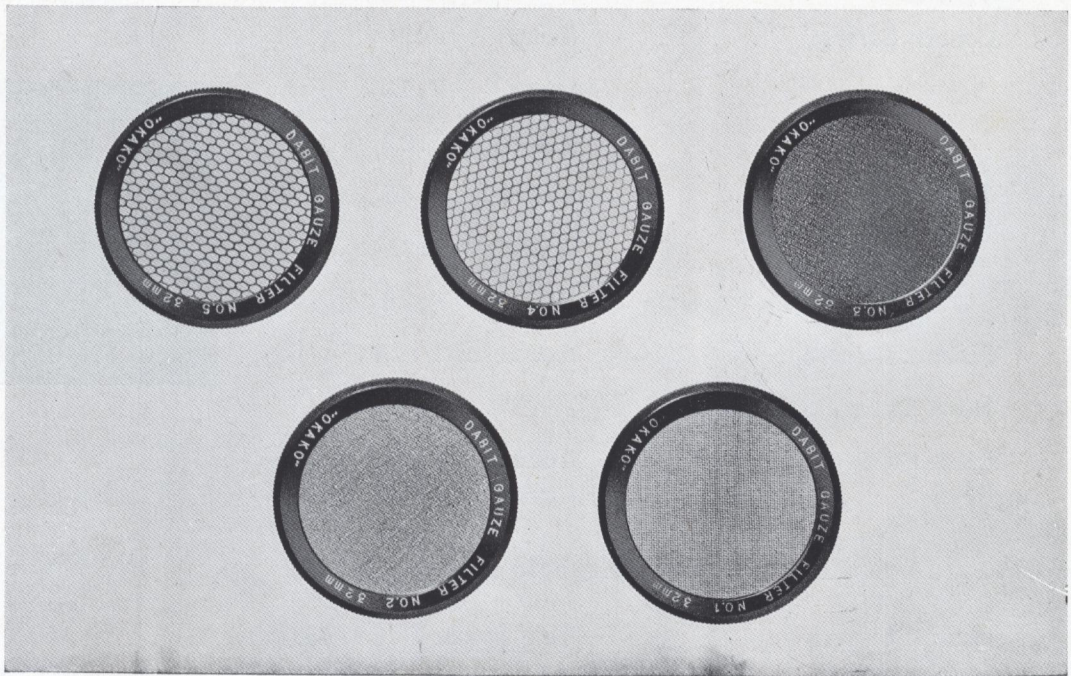
CHARACTERISTICS OF DABIT HAZE FILTER

For Photographing : No. 1, No. 2, & No. 3

For Enlarging & For Photographing : No. 4, & No. 5

The word HAZE itself means thin mist or fog, "HAZE FILTER" is absolutely our new line and our new sale!

For the last ten years, the Haze Filters were the composition of two flat glasses with the silk gauze between them, and these were pasted by Balsam, but owing to the heat of the enlarger, Balsam often melts away. In order to avoid these phenomena, we have had to investigate out the most simple and the most everlasting ones. As a matter of fact our "HAZE" has no such phenomena like the above mentioned. It is made of a solid glass with the perfect electric printing. therefore, there is no possibility of changing the colour or the melting of the cross by means of the enlarger's heat.



“HAZE” FILTER

Let us put our memories way back to the time of infantile photographing period that many a people enjoyed the artistic photographs by means of the soft focus which was arranged by the Studio Camera, and must use the special soft focus lens.

But since the “HAZE FILTER” has been manufactured the trouble of using the Studio Camera has completely put aside. It is quite easy to screw the Haze Filter to the Camera lens mount of any hand camera size, and it will bring the perfect result. But according to the Haze Filter's density the exposure must be adjusted anyway, and for enlarging usually No. 4 & 5 are used. By using these two filters very interesting consequences will be appeared, that is to say it is quite easy to make out the photographed article in very soft appearance and another thing is that those who have the small cameras and they intened to do the enlarge of the photographs these No. 4 and No. 5 will stop the roughness of the corpuscular. Of course, it is not our desire to make out the very soft result on the printing paper but in order to take away the roughness of the corpuscular the mentioned filter must be mounted to the enlargers' lens. For instance, if the time of exposure is 10 seconds, for the first 6 seconds use the Haze Filter and the rest of 4 seconds use without the filter then the condition of the enlarged picture will be fixed up in any desire.

As per your desire we can submit you any type and it is up to you to chose them and can be used forever. As you know very well that most of the filters will change their colours but ours are made under the very rigid examination and owing to the special chemical arrangement there will be no such fear, and at this time of the modern world we will ask you to purchase the new filters of "HAZE."

APPLICATION OF THE HAZE FILTER

According to the density of the fibre, and the details of the cross, the Haze Filters are divided as follows: No. 1, 2, 3, 4, & 5 and these will give out the special result according to the thickness of the density.

At the time of photographing the exposure factor is very little and it is quite easy to take a snap of the object while it is moveing, and especially when you use No. 4 & 5 the snap can be done very easily and also the exposure factor is very little too.

No. 4 & 5 can be used both in enlarging and in photographing and these may be easily screwed to the enlarger's lens and will avoid the roughness of the corpuscular and will make out the most beautiful picture.

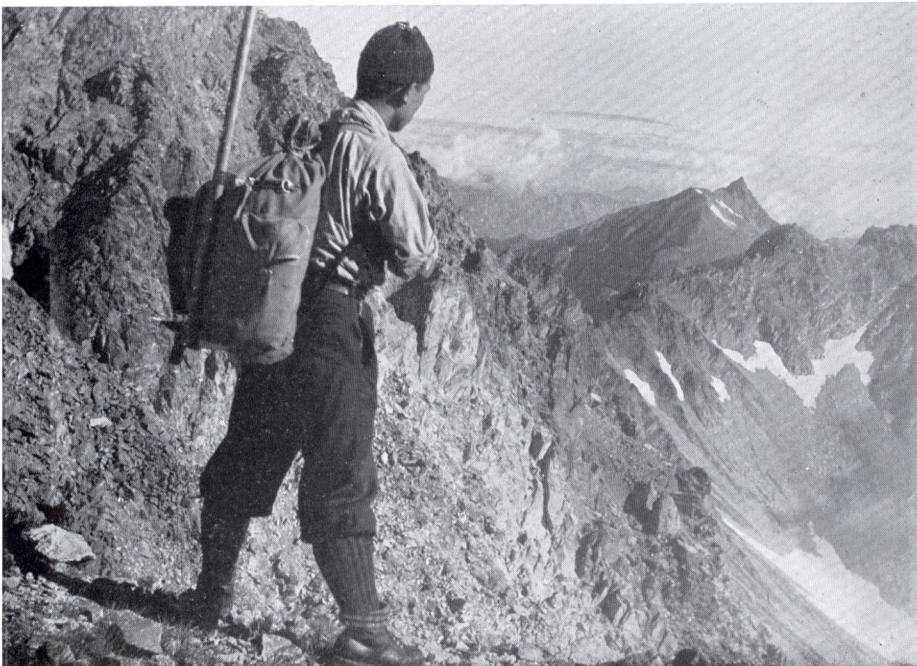
For No. 1, 2, 3, the result is same as when you take the photographs by using No. 4, & No. 5 filters, simply screw these to the enlarger's lens mount, then you will get the very soft appearance on your printing paper.

PHOTOGRAPHING CASE

When you try to take the picture of the very white things or the very bright articles usually the halation or the reflection will be seen on every edge of the articles, but once you use the Haze Filter these phenomenon will disappear and you can admire the most beautiful outlines on your printing paper.

ENLARGING CASE

It is absolutely different from the point of the photographing view, that the shadows or the very dark objects will appear on the printing paper quite distinctly, but in order to make out the picture in the most artistic way, usually, people often use our HAZE.



DABIT HAZE FILTER WITH FRAME

Art.	F 515	Dabit	Haze	Filter	with	Frame	28.5 m/m	No. 1
"	F 516	"	"	"	"	"	28.5 "	No. 2
"	F 517	"	"	"	"	"	28.5 "	No. 3
"	F 518	"	"	"	"	"	28.5 "	No. 4
"	F 519	"	"	"	"	"	28.5 "	No. 5
"	F 520	Dabit	Haze	Filter	with	Frame	32 m/m	No. 1
"	F 521	"	"	"	"	"	32 "	No. 2
"	F 522	"	"	"	"	"	32 "	No. 3
"	F 523	"	"	"	"	"	32 "	No. 4
"	F 524	"	"	"	"	"	32 "	No. 5
"	F 525	Dabit	Haze	Filter	with	Frame	34 m/m	No. 1
"	F 526	"	"	"	"	"	34 "	No. 2
"	F 527	"	"	"	"	"	34 "	No. 3
"	F 228	"	"	"	"	"	34 "	No. 4
"	F 529	"	"	"	"	"	34 "	No. 5
"	F 530	Dabit	Haze	Filter	with	Frame	36 m/m	No. 1
"	F 531	"	"	"	"	"	36 "	No. 2
"	F 532	"	"	"	"	"	36 "	No. 3
"	F 533	"	"	"	"	"	36 "	No. 4
"	F 534	"	"	"	"	"	36 "	No. 5
"	F 535	Dabit	Haze	Filter	with	Frame	37 m/m	No. 1
"	F 536	"	"	"	"	"	37 "	No. 2
"	F 537	"	"	"	"	"	37 "	No. 3
"	F 538	"	"	"	"	"	37 "	No. 4
"	F 539	"	"	"	"	"	37 "	No. 5
"	F 540	Dabit	Haze	Filter	with	Frame	42 m/m	No. 1
"	F 541	"	"	"	"	"	42 "	No. 2
"	F 542	"	"	"	"	"	42 "	No. 3
"	F 543	"	"	"	"	"	42 "	No. 4
"	F 544	"	"	"	"	"	42 "	No. 5
"	F 545	Dabit	Haze	Filter	with	Frame	for Sonar Lens	No. 1
"	F 546	"	"	"	"	"	"	No. 2
"	F 547	"	"	"	"	"	"	No. 3
"	F 548	"	"	"	"	"	"	No. 4
"	F 549	"	"	"	"	"	"	No. 5

Supplementary Lenses for Close Up Objects

ADPTERS (PROXARS)

The camera itself will focus on all objects 3 feet and more away, but for shorter distances than this supplementary lenses should be screwed into the lens mount. The coupled distance meter can then not be used, and the distance must be measured and the lens focused by hand.

Usually the proxars lenses will be used when the camera and the object's distance is nearer than 3 feet.

It is understood to take the picture of the close ups.

DABIT PROXARS

Art.	L 416	28.5 m/m Proxar for Rollei with Frame
„	L 417	Rollei Proxar 2 Pcs. to a Set
„	L 418	Rollei Par with Frame
„	L 419	27 m/m Proxar with Frame
„	L 420	32 " Proxar with Frame
„	L 421	37 " Proxar with Frame
„	L 422	42 " Proxar with Frame



“LEIKY” Camera Attachment

“LEIKY” near focussing device, a special distance meter that is permanently set for distance of nearer than a meter. Mount this attachment to your Leica Camera and set up the lens Elmar 5c/m then it will bring out the perfect result.

Operation of this attachment is very simple, by looking through the range finder and turn the knob untill the correct distance is reached. As this attachment has no connection with PROXAR LENSES, therefore, it is quite easy to take the snap between .1 meter and 20c/m.

This is our newly designed article and is manufactured with very light materials.

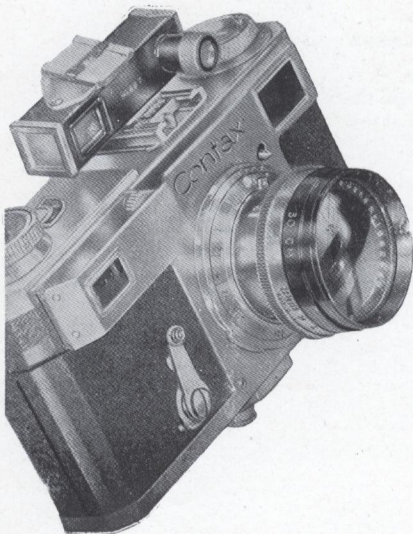
“CONTAMETER” NEAR FOCUSING DEVICE

It is a special distance meter that is permanently set for distances of 50 cm (20'') 30 cm (12'') and 20 cm (8'') This is fitted into the shoe on top of the camera, and the latter moved toward the object to be photographed until the correct distance is reached. It is really impossible to believe what an astonishing range of new subjects, in particular such things as plants and insects, that the contermeter brings with it.

Art. CM 600

Contameter Contax

Lens 50 cm, 30 cm, 20 cm



Art. CM 601

Contameter Super Six

Lens 50 cm, 30 cm, 20 cm.

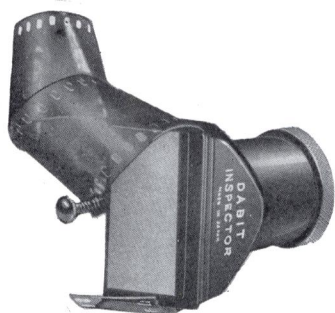
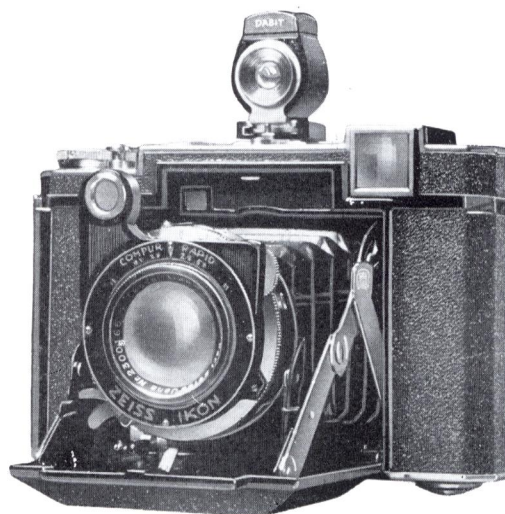
DABIT PRISM FINDERS

Cameras have built-in optical finders there are certain occasions in which a special finder makes the work a good deal simpler.

The under photographed finders are pushed into the shoe provided on the top of the camera body.



Art. No. 443 Daffa Prism Finder



Art. C. A. 1101

DABIT FILM INSPECTOR

This article is made of very light materials and composed of very bright lens. Each packed to an individual toilet cardboard.

LENS HOOD (SUN SHADE)

Pictures taken against the light necessitate the use of a LENS HOOD.

Photographs against the light from one of the most attractive features of photography. But they are only possible if the lens is protected from the direct rays of the sun. It is for this purpose that the lens hood is designed.

The hood is also very useful for night pictures, when it prevents the intrusion of reflections from side light.



Names Must be not Only Thought out But Sought out.

DABIT LENS HOOD

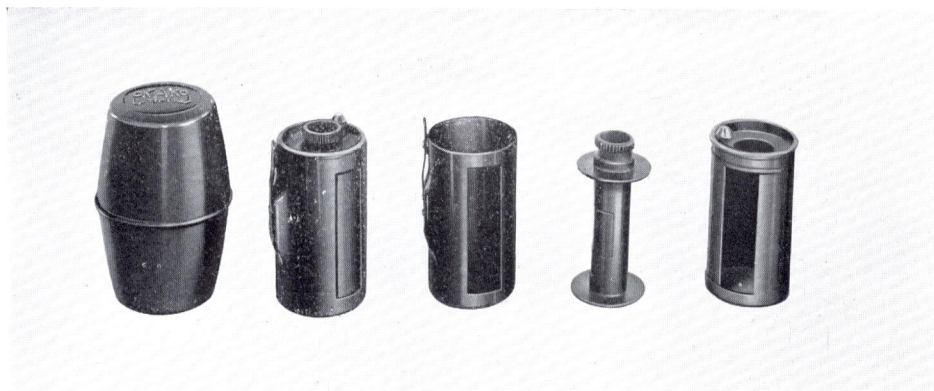
- | | | |
|------|-------|--|
| Art. | H 700 | Square Hood for Rollei 28.5 m/m with Threads. |
| „ | H 701 | Square Hood for Rollei 28.5 m/m without Threads. |
| „ | H 702 | Rollei Automat Hood. |
| „ | H 703 | Rollei Model 2 Hood. |
| „ | H 704 | 24 m/m Hood with Threads. |
| „ | H 705 | 24 m/m Hood without Threads. |
| „ | H 706 | 27 m/m Hood with Threads. |
| „ | H 707 | 27 m/m Hood without Threads. |
| „ | H 708 | 32 m/m Hood with Threads. |
| „ | H 709 | 32 m/m Hood without Threads. |
| „ | H 710 | 37 m/m Hood with Threads. |
| „ | H 711 | 37 m/m Hood without Threads |
| „ | H 712 | 42 m/m Hood with Threads. |
| „ | H 713 | 42 m/m Hood without Threads. |
| „ | H 714 | Sonar Hood with Threads. |
| „ | H 715 | 51 m/m Hood with Threads. |
| „ | H 716 | 51 m/m Hood without Threads. |
| „ | H 717 | 36 m/m Hood for Leica with Screw Black Finish. |
| „ | H 718 | 36 m/m Universal Hood for Leica. |



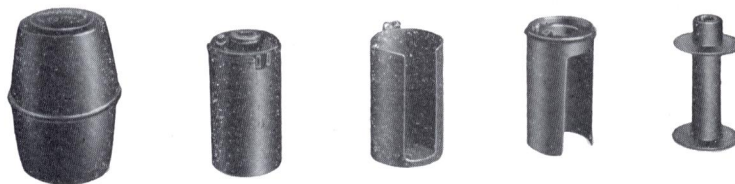
Filter y-4 Orange.

MAGAZINES AND SPOOLS

Both the magazines and the spools are made of very light materials and known for its lightness and brightness. We are manufacturing Leica and Contax cameras' spools and Magazines.

**LEICA**

- Art. M 719 Magazine Complete with Spool for Leica Camera.
 „ M 720 Magazine Complete with Spool for Contax Camera.
 „ M 721 Spool only for the above two articles.



CONTAX Magazine

DABIT ENLARGEMENT LENS

An efficient photographic equipment is one of the most appreciated and most desirable features of the modern laboratory. The Okada Optical Ind. Co., Ltd. offers a complete series of photographic lenses of a quality that is unexcelled.

ENLARGEMENT LENSES WITH FRAMES

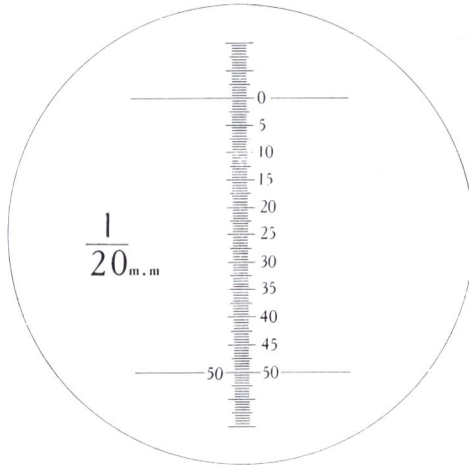
Enlargement Lens	F : 3.5	70 m/m
„	„	F : 3.5 50 m/m
„	„	F : 4.5 70 m/m
„	„	F : 4.5 50 m/m



Filter y—2 Medium yellow.

DABIT MICROSCOPE

Dabit Microscope (meter microscope) is a special form of microscope, is designed for measuring the impression made in Brinell Ball Test.



CONSTRUCTION

Dabit Microscope consists of a body tube on a circular base, which has 20/1 m/m aperture for viewing the specimen. The interior of the body tube surrounding the cut out portion is finished in which to increase illumination of the specimen. The focusing of the scale will be adjusted by means of the eyepiece.



USES

Our microscope will be welcomed by the factories, universities, laboratories, hospitals etc. and is used for testing of web of the cloth, minerals, threads of bolts and nuts, surface of the materials etc

Manificati ^o n	Field of View	Measuring Sphere	Graduation	Length
30 X	8-1/2 m/m	7 m/m	20/1 m/m	190 m/m

TERMS

QUOTATION

Prices listed in our quotation are list prices and we will give you the very special discount here under.

GUARANTEE

We exercise the utmost care in manufacturing and packing. In case of faulty goods inadvertently reaching our customers, we shall feel under obligation if our attention is called thereto.

RETURNING OF GOODS

Goods being returned for any reason should be plainly tagged with the sender's name and address. Special identification tags are furnished on request. Wherever possible, please give date of invoice on which the goods were originally billed.

PAYMENTS

We are always sending out our goods under Irrevocable Letter of Credit without recourse or you may send us advance remittance of 1/3rds. of the whole order amount.

NOTICE

Prices listed in our quotation are subject to change without notice. And Please note we make no charge for boxing and packing.

OKADA OPTICAL INDUSTRIAL CO., LTD.
EXPORT DEPARTMENT.

INDEX

Prism Binocularspage	4...	11
Opera Glass	12
Camera	14... .. 15
Shutter	16.. ... 17
Soft Focus Lens	18
Filters	20.. ... 25
Haze Filter	26... .. 30
Proxars	31
Contameter	32
Prism Finders	33
Lens Hood	34.. ... 35
Magazine...	36
Enlargement Lens	37
Microscopes	38
Terms	39



CATALOGUE NO.26